

Gran's Stitch Niche

www.gransstitchniche.com

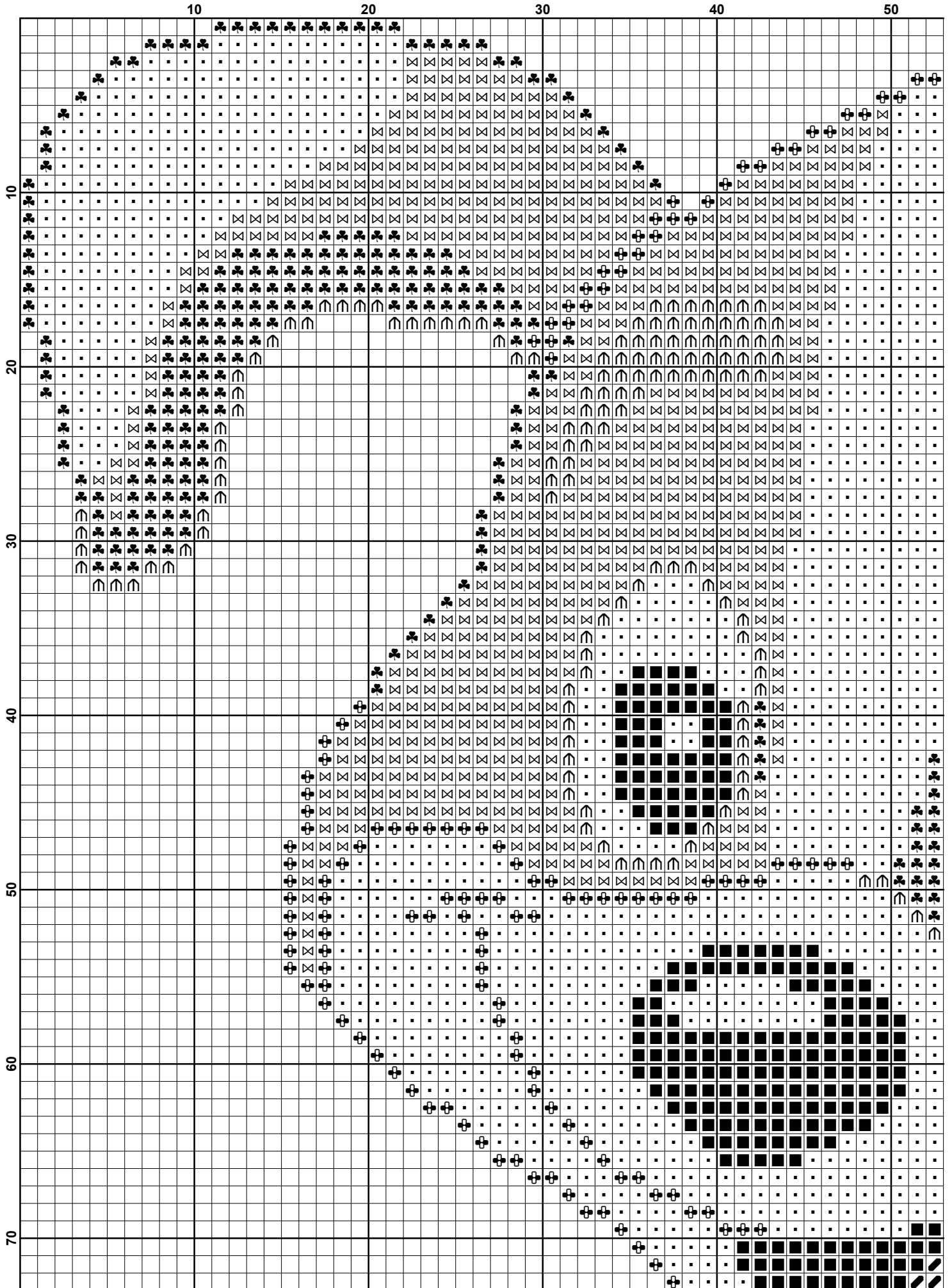
Puppy in Pot

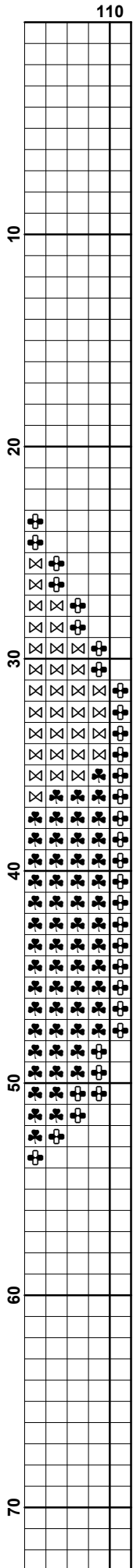


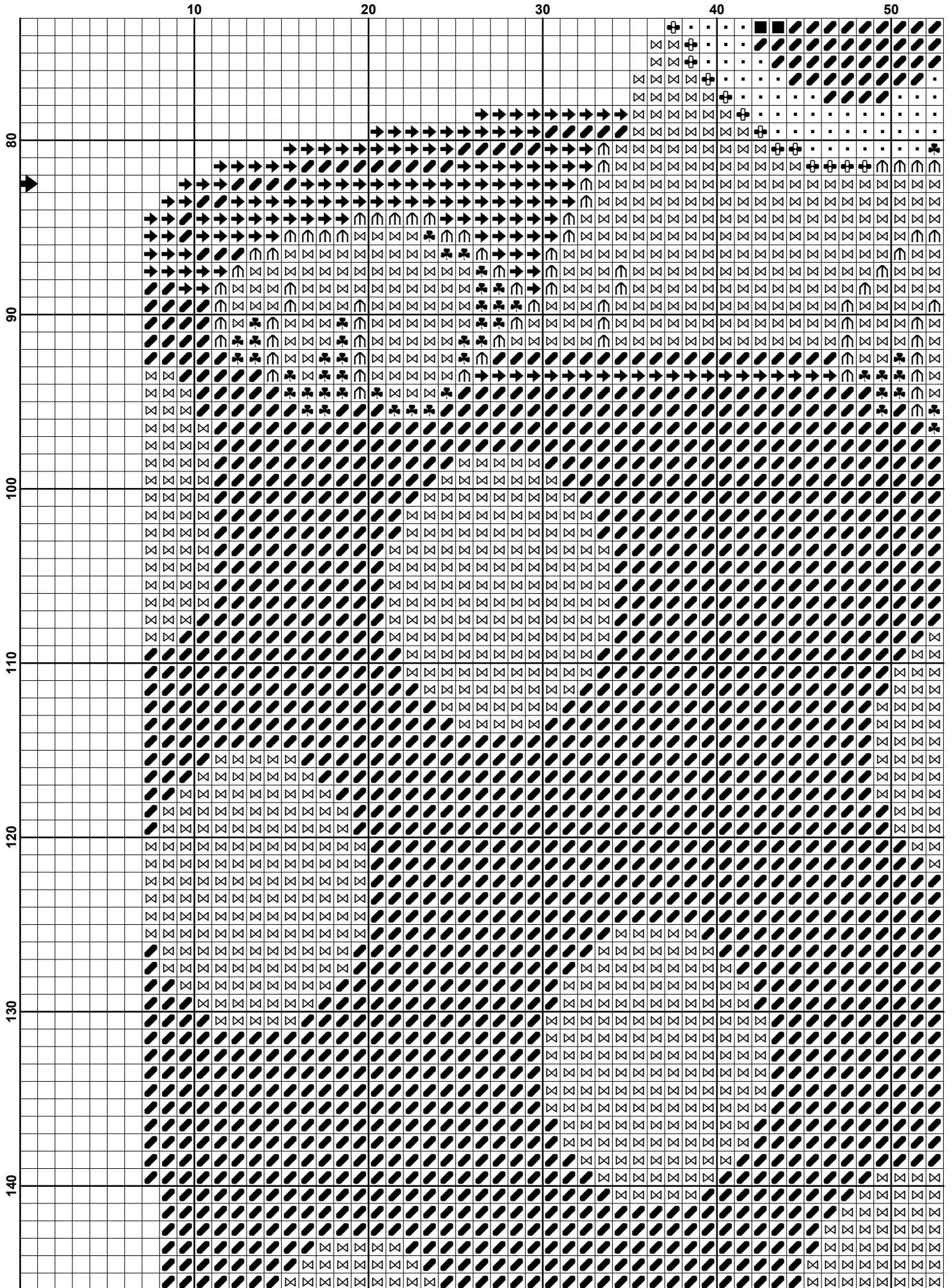
Gran's Stitch Niche ©

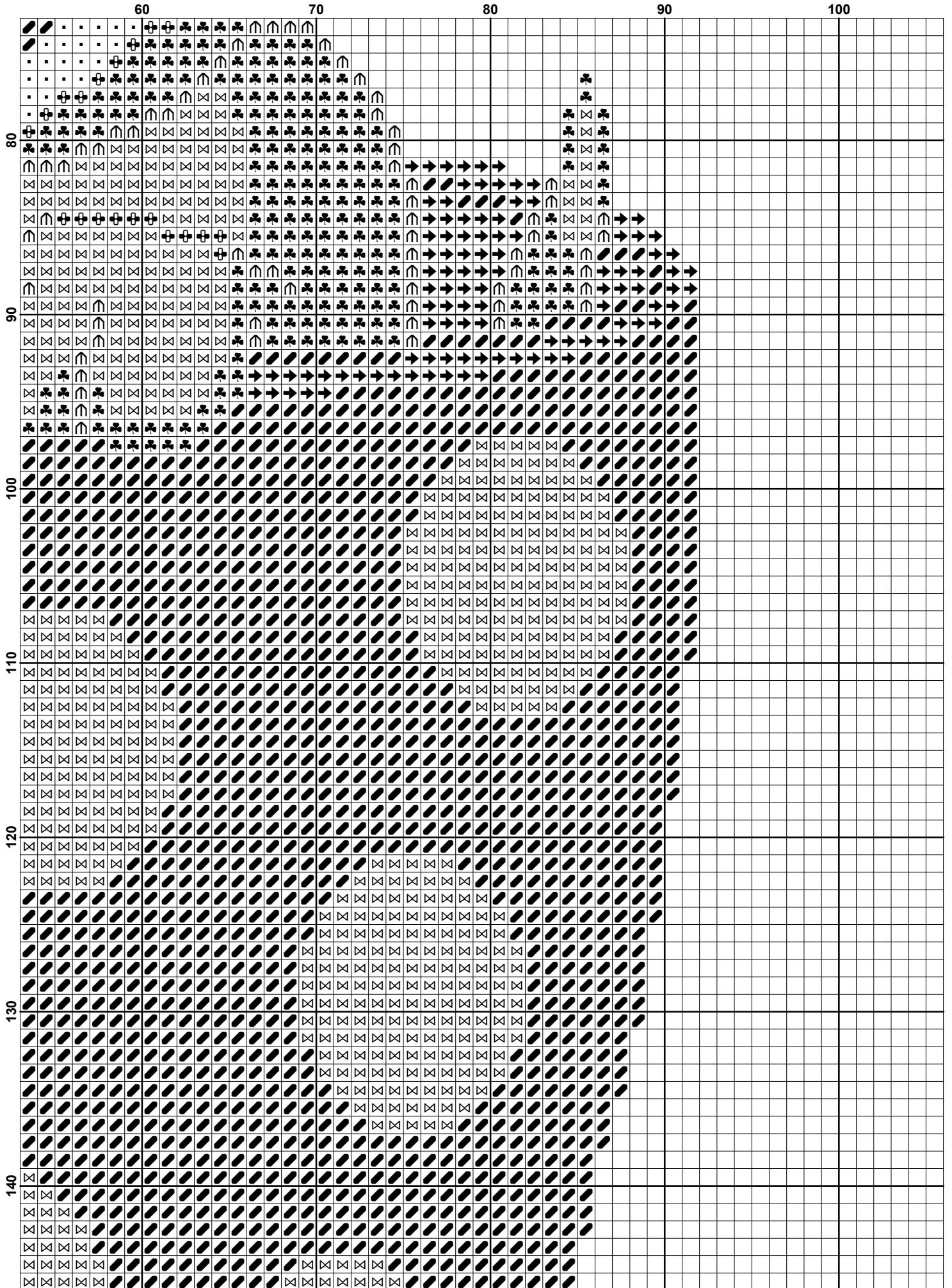
This cross stitch pattern may be shared with your friends. Please feel free to pass this pattern on to others you think might like it.

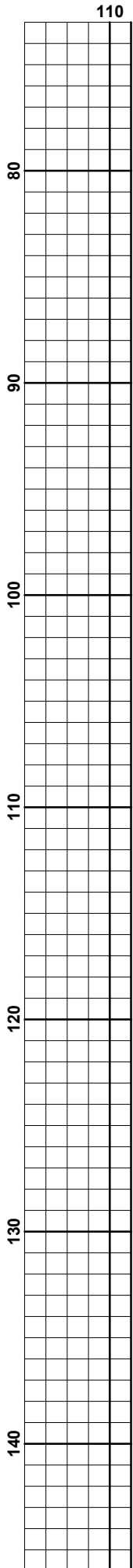
www.gransstitchniche.com

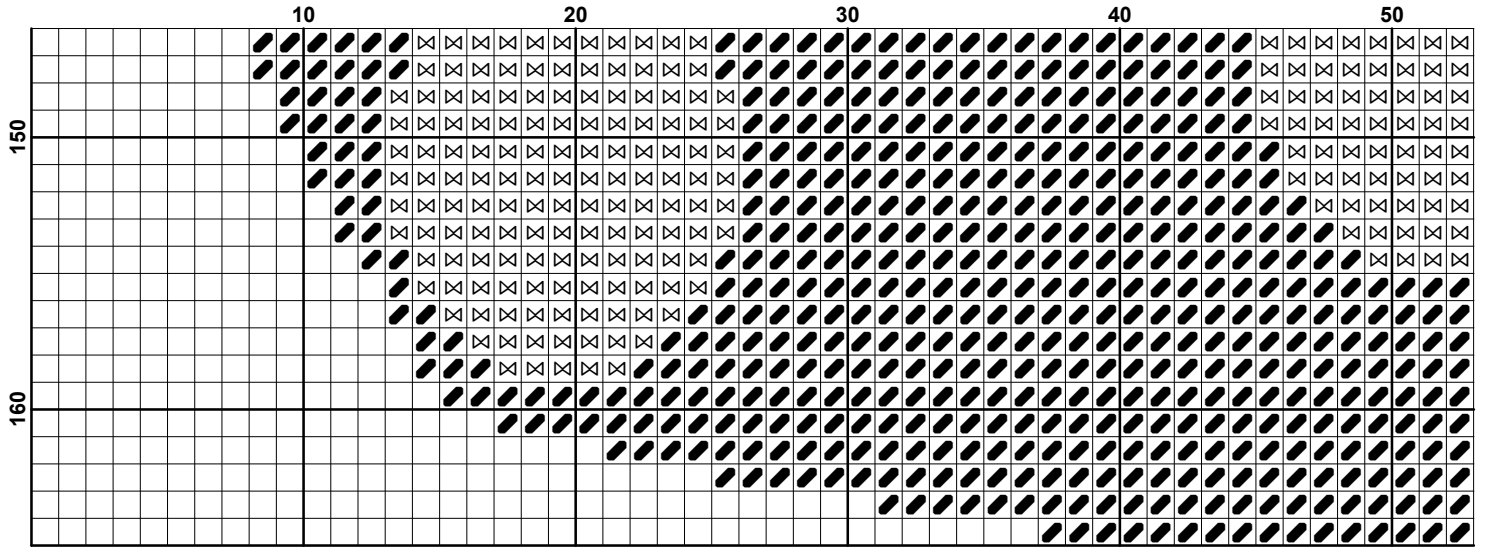


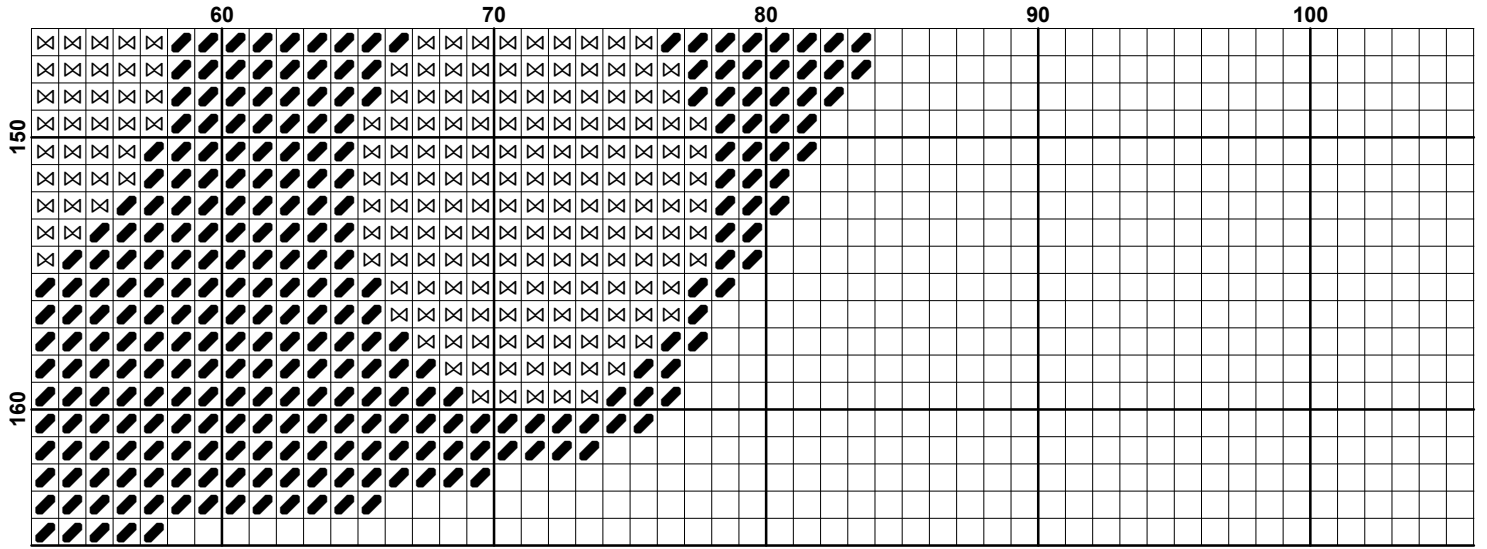


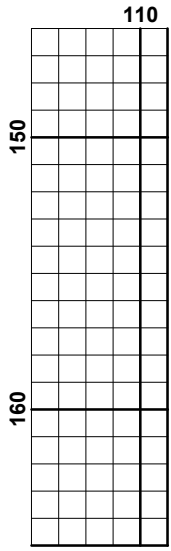








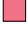
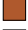










Pattern Name: Puppy in Pot
Designed By: Gran's Stitch Niche
Company: www.gransstitchniche.com
Copyright: Gran's Stitch Niche
Fabric: Aida 14, White
 111w X 165h Stitches
Size(s): 14 Count, 7-7/8w X 11-3/4h in
 16 Count, 6-7/8w X 10-1/4h in
 18 Count, 6-1/8w X 9-1/8h in
 22 Count, 5w X 7-1/2h in

Floss Used for Full Stitches:

Symbol	Strands	Type	Number	Color
	2	DMC	310	Black
	2	DMC	606	Bright Orange-Red
	2	DMC	893	Carnation-LT
	2	DMC	920	Copper-MD
	2	DMC	976	Golden Brown-MD
	2	DMC	3827	Golden Brown-Pale
	2	DMC	3853	Autumn Gold-DK
	2	DMC	3865	Winter White

Usage Summary**Strands Per Skein:** 6**Skein Length:** 313.0 in

Type	Number	Full	Half	Quarter	Petite	Back(in)	Str(in)	Spec(in)	French	Bead	Skein Est.
■ DMC 310	310	300	0	0	0	0.0	0.0	0.0	0	0	1.000
■ DMC 606	606	4061	0	0	0	0.0	0.0	0.0	0	0	2.000
■ DMC 893	893	258	0	0	0	0.0	0.0	0.0	0	0	1.000
■ DMC 920	920	457	0	0	0	0.0	0.0	0.0	0	0	1.000
■ DMC 976	976	355	0	0	0	0.0	0.0	0.0	0	0	1.000
■ DMC 3827	3827	3158	0	0	0	0.0	0.0	0.0	0	0	2.000
■ DMC 3853	3853	1937	0	0	0	0.0	0.0	0.0	0	0	1.000
■ DMC 3865	3865	1763	0	0	0	0.0	0.0	0.0	0	0	1.000